

# Power Divider: Dual Marker Beacon SSPD-113-39



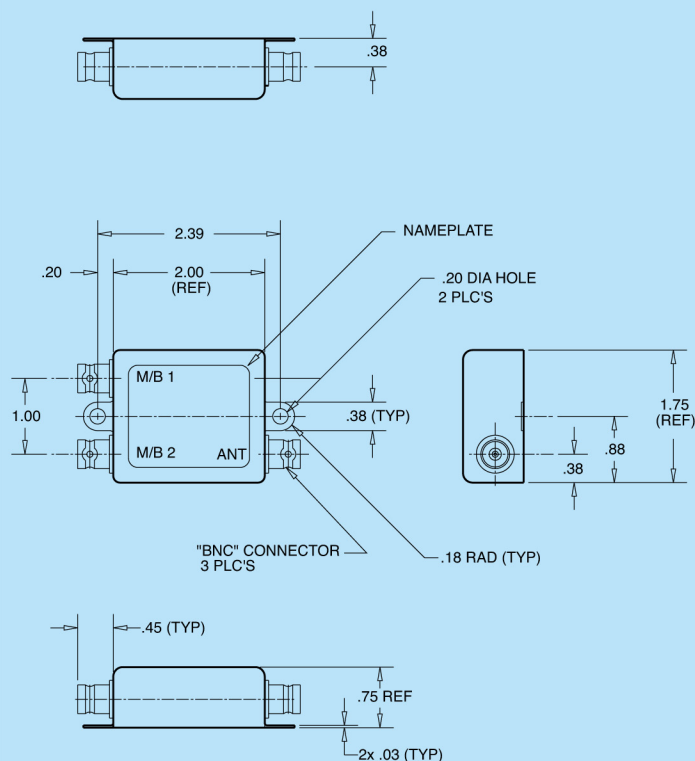
## DESCRIPTION

**SSPD-113-39:** Equal-power divider for marker beacon applications. The SSPD-113-39 Power Divider allows a single marker beacon antenna to be connected to two separate marker beacon receivers.

**FEDERAL & MILITARY SPECS:** RTCA/DO-160, MIL-STD-810.

SPECIFICATIONS	MARKER BEACON
<b>MODEL</b>	<b>SSPD-113-39</b>
<b>ELECTRICAL</b>	
Frequency	75 MHz
VSWR	1.5 : 1 max.
Insertion Loss	.5 dB max.
Isolation	20 dB min.
<b>MECHANICAL</b>	
Weight	3 oz.
Height	.75 in.
Width	1.75 in.
Material	Tin-plated CR steel
Finish	Skydrol Resistant Enamel
	Enamel, color flat grey
Connector	Typ "BNC" 3 Plc's
<b>ENVIRONMENTAL</b>	
Temperature	-65°F to +185°F
Shock	10 Gs
Vibration	15 Gs
Altitude	55,000 ft

## OUTLINE DRAWING



SSPD-113-39

